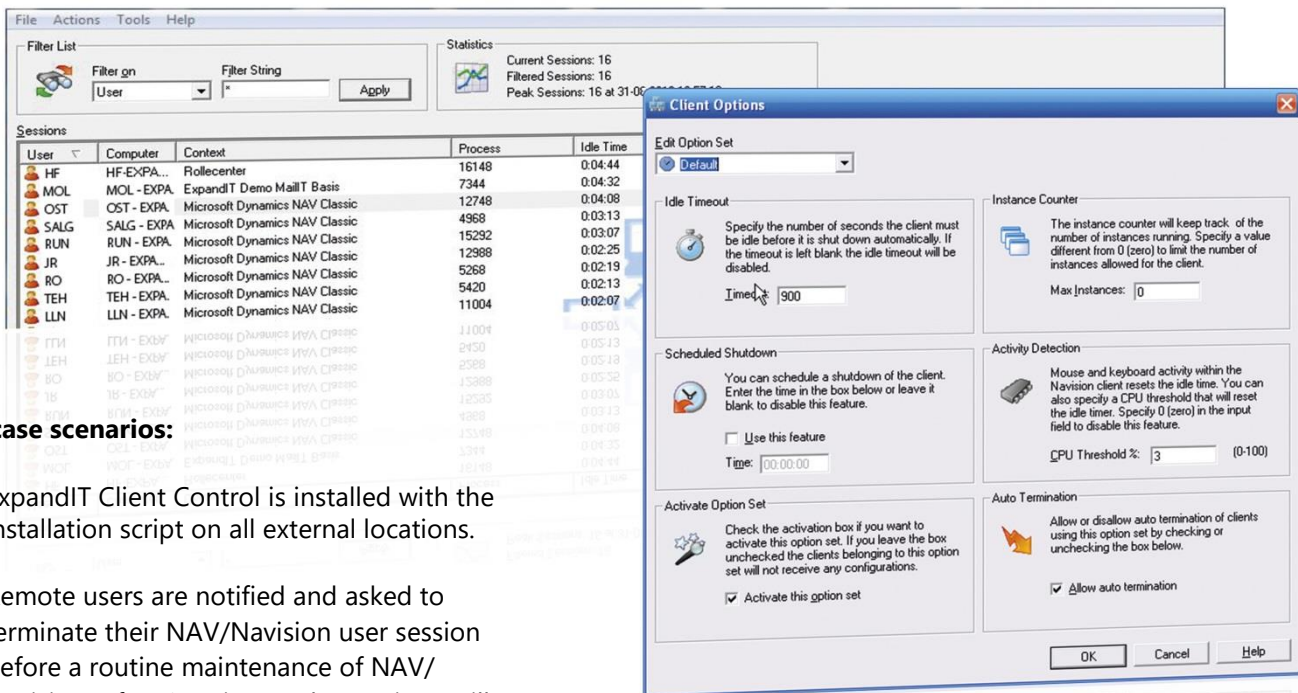




ExpandIT Client Manager ensures optimal use of NAV-Sessions and makes the system safer where users frequently leave their workplace.



Use case scenarios:

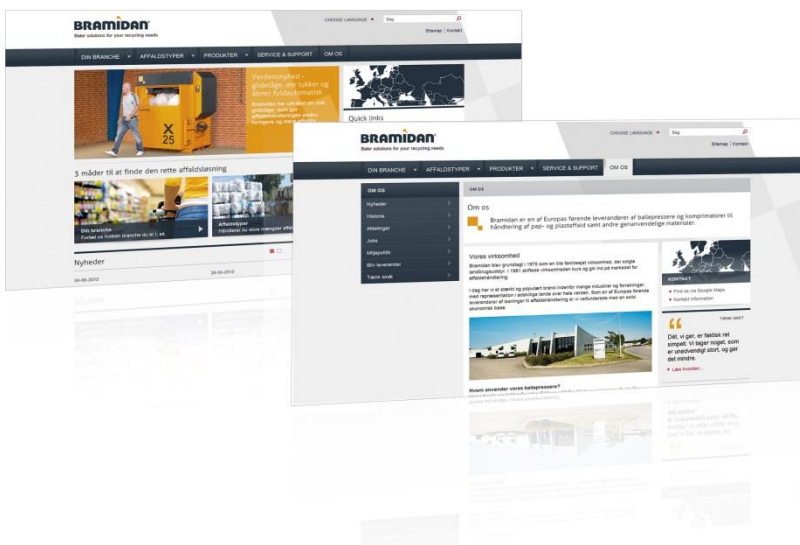
- ExpandIT Client Control is installed with the installation script on all external locations.
- Remote users are notified and asked to terminate their NAV/Navision user session before a routine maintenance of NAV/ Navision. After 15 minutes the sessions still active are terminated.
- All users outside Finance and IT are allowed one user session only.
- The 'most' idle session is terminated to ensure access to NAV/Navision for new users and session based systems integration.
- Users required to run heavy reports are allowed an extra user session and their 'Activity Detection' is set larger than zero to ensure that a session running a report is not terminated as idle.
- The IT manager can document session usage and calculate when new sessions should be ordered to meet the required service level.

Product functionality and advantages in brief:

- List running clients.
- Send messages to NAV/Navision users.
- Terminate user sessions running on remote machines.
- Central management of ExpandIT Client Control configurations.
- 'Most' idle session ensure access to NAV/Navision
- Show process information for users sessions.
- 99 user group option sets.
- Limit number of sessions per user for one user or groups of users.
- From Navision 1.10 to NAV 2018.

ExpandIT Client Manager can be downloaded from www.expandit.com and comes with a demonstration license with a three client limitation.

Functionality	ExpandIT Client Manager (client only) v.4	ExpandIT Client Manager Standard	ExpandIT Client Manager Enterprise
Automated installation	●	●	●
Automatic log off when idle	●	●	●
Logoff at end of day	●	●	●
CPU monitoring — allow long reports	●	●	●
Central notification and termination of individual and/or groups of clients		●	●
Central management of active sessions		●	●
Central configuration of clients		●	●
IP-port configuration		●	●
Prevent session hogging		●	●
Terminate 'most' idle session			●
Enable guaranteed session availability			●



“With us ExpandIT Client Manager had the desired effect. We can manage access to Navision, ensuring that employees are not using Navision in a given period, is automatically switched off. It allows that other people can connect and we should not have to invest in additional Navision licenses.”
 - IT-manager, Karsten Aarhus, Bramidan A/S

Microsoft Partner
 Gold Application Development